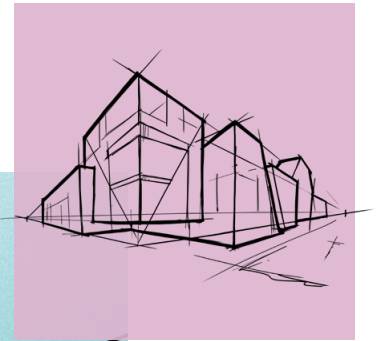


Safe Use Instructions Sheet



Rockpanel

Safe Use Instructions Sheet

1. Product and company identification

| | | |
|----------------------------|--|--|
| Generic product name | ROCKPANEL | |
| Recommended use | Robust and flexible board material for use in facades, roof edge finishing, fascias and other detailing. | |
| Producer | ROCKWOOL B.V. / ROCKPANEL Konstruktieweg 2 6045 JD ROERMOND THE NETHERLAND | Tel.: +31 (0)475 353 000 Fax: +31 (0)475 353 550 Email: info@rockpanel.com |
| Emergency telephone number | +31 (0)475 353 000 | |

2. Hazards identification

| | |
|------------------------|--|
| Most important hazards | There is no Hazard statement associated with this product. |
| Specific hazards | Non applicable. |

3. Composition / information on ingredients

| Substance | C.A.S. number ⁽³⁾ | Amount weight (%) | Classification and labelling (Regulation (CE) N° 1272/2008) | Classification and labelling (European directive 67/548/EEC) |
|---------------------------|------------------------------|-------------------|---|--|
| Stone wool ⁽¹⁾ | 287922-11-6 | 84 – 92% | Not classified ⁽²⁾ | Not classified |
| Binder | | 7 – 15% | Not classified | Not classified |
| Cured Coating | | 0 – 2.5% | Not classified | Not classified |

(1): Man-made vitreous (silicate) fibres with random orientation with alkaline oxide and alkali earth oxide (Na₂O+K₂O+CaO+MgO+BaO) content greater than 18% by weight and fulfilling one of the nota Q conditions

(2): Non classified H351 "suspected of causing cancer". Stone wool fibres are not classified carcinogenic according to the nota Q of the Directive 97/69/EEC and the regulation n° 1272/2008 (page 335 of the JOCE L353 of December 31, 2008)

(3): C.A.S. : Chemical Abstract Service

4. First aid measures

Information according to the different exposure route for dust:

| | |
|--------------|--|
| Inhalation | Remove from exposure. Rinse the throat and blow nose to clear dust. |
| Skin contact | If itching occurs, remove contaminated clothing and wash skin gently with cold water and soap. |
| Eyes contact | Rinse abundantly with water for at least 15 minutes. |
| Ingestion | Drink plenty of water if accidentally ingested. |

If any adverse reaction or discomfort continues from any of the above exposures, seek medical professional advice.

(1): The European Regulation (ER) on Chemicals N° 1907/2006 (REACH) enforced on June 1st 2007 requires Material Safety Data Sheet (MSDS) only for hazardous substances and mixtures/preparations. Mineral wool products (like panels), are articles under REACH and therefore, MSDS is not legally required. Nevertheless, ROCKWOOL decides to provide its customers with the appropriate information for assuring safe handling and use of mineral wool through this Safe Use Instructions Sheet.

Rockpanel

Safe Use Instructions Sheet

5. Fire fighting measures

| | |
|------------------------------|--|
| Suitable extinguishing media | ROCKPANEL board material is subject to thorough testing and is a fire-safe building material. In the event of a fire the mineral wool structure of ROCKPANEL board material remains fully intact. There is absolutely no drop-formation and the risk of fire spreading is prevented. Packaging materials or facings may however be combustible. Suitable extinguishing media; water, foam, carbon dioxide (CO ₂), and dry powder. In large fires in poorly ventilated areas or involving packaging materials respiratory protection / breathing apparatus may be required. |
|------------------------------|--|

6. Accidental release measures

| | |
|--------------------------|---|
| Personal precautions | In case of presence of high concentrations of dust, use the same personal protective equipment as mentioned in section 8. |
| Environmental protection | Not relevant. |
| Methods for cleaning up | Clean with vacuum or dampen with water spray prior to sweeping up. |

7. Handling and storage

Handling

| | |
|----------------------|---|
| Technical measures | No specific measures. ROCKPANEL advises that users should wear standard personal protection equipment during sawing. Use hard point hand saw. Circular saw e.g. fine-toothed Widea saw blade. Fretsaw, e.g. fine-toothed saw blade or a saw blade with tungsten granules. We advice to use dust-reducing equipment in combination with an exhaust hood in a well ventilated room when sawing indoor. In case of outdoor sawing we advice to use dust-reducing if a power tool is used, it must be equipped with efficient air suction. Position the saw installation so that the wind blows away the released dust. |
| Precautions | Ensure adequate ventilation of workplace. See section 8. |
| Safe handling advice | Not relevant. |

Storage

| | |
|----------------------------|--|
| Technical measures | No special measures necessary. |
| Suitable storage condition | ROCKPANEL boards are insensitive to moisture. Nevertheless it is recommended that the board material be stored on a flat pallet in dry, flat, frost-proof and protected conditions. Never stack more than two pallets on top of each other. The panels should be raised when being machined. The panels should not be slid over one another. Protective foam membranes should be placed between the sheets again to protect the surface layer, for example when the panels are stacked after having been sawn. |
| Incompatible materials | None. |
| Packaging material | Products are packed in polyethylene film on wooden pallet. |

Rockpanel

Safe Use Instructions Sheet

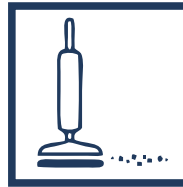
8. Exposure controls / personal protection

| | |
|---|---|
| Exposure Limit Value | None at European level. |
| Exposure controls | No specific requirements. |
| Individual protection equipments | |
| Respiratory protection | When working in unventilated area or during operations which can generate emission of any dust, wear a disposable face mask. Type in accordance with EN 149 FFP1 is recommended. |
| Hand protection | Use gloves to avoid itching in conformity with EN 388 |
| Eyes protection | Wear goggles when working overhead. Eye protection according with EN 166 is advised. |
| Skin protection | When working in unventilated area we recommend to cover exposed skin. |
| Hygiene measures | Rinse in cold water before washing |

The following sentence and pictograms are printed on packaging.
The mechanical effect of fibres in contact with skin may cause temporary itching



Ventilate working area if possible.



Clean area using vacuum equipment.



Waste should be disposed of according to local regulations.



Wear goggles when working overhead.



Cover exposed skin.
When working in unventilated area wear disposable face mask.



Rinse in cold water before washing.

Rockpanel

Safe Use Instructions Sheet

9. Physical and chemical properties

| | |
|----------------------|--|
| Physical state | Solid. |
| Form | Articles in panel or plank form. |
| Colour | Grey green (basic board). |
| Odour | Not applicable. |
| pH | Not applicable. |
| Boiling point | Not relevant. |
| Flash point | Not relevant. |
| Flammability | Not relevant. |
| Explosive properties | Not relevant. |
| Density | From 1000 to 1300 kg/m ³ . |
| Water solubility | Generally chemically inert and insoluble in water. |
| Fat solubility | Not applicable. |
| Melting point | > 1000 °C. |

10. Stability and reactivity

| | |
|----------------------------------|--|
| Stability | Binder will decompose above ca. 200°C. |
| Dangerous reactions | None, when the product is applied according to recommended use (see 1.). |
| Hazardous decomposition products | None, when the product is applied according to recommended use (see 1.). |

11. Toxicological information

| | |
|---------------------|--|
| Acute effect | The mechanical effect of fibres in contact with the skin can cause a temporary itching. |
| Carcinogenic effect | Classification not applicable for mineral wool in this product; in accordance with the directive 97/69/EC and European Regulation 1272/2008, nota Q. (see 15.) |

12. Ecological information

This product is not expected to cause harm to animals or plants during normal conditions of use.

Acute effect

13. Disposal considerations

| | |
|------------------------------------|--|
| Waste from residues | Dispose of in accordance with regulations and procedures in force in country of use or disposal. |
| Dirty packaging | Dispose of in accordance with local regulations. |
| Code from European Waste Catalogue | 17 06 04. |

Rockpanel

Safe Use Instructions Sheet

14. Transport information

| | |
|---------------------------|--------------------------|
| International regulations | No specific regulations. |
|---------------------------|--------------------------|

15. Regulatory information

The European directive 97/69/EC replaced by the regulation (EC) N° 1272/2008 concerning the classification, labelling and packaging of the substance and the mixtures does not classify Stone wool fibres as hazardous, if they are in compliance with the note Q of this Regulation.

The note Q specifies that classification as carcinogenic does not apply if:

- a short-term biopersistence test by inhalation has shown that fibres longer than 20µm have a weight half life **less than 10 days**, or
 - a short-term biopersistence test intra-tracheal instillation has shown fibres longer than 20µm have a weighted half life **less than 40 days**, or
 - an appropriate intra-peritoneal test has shown no evidence of excess carcinogenicity, or
 - a suitable long term inhalation test has shown absence of relevant pathogenicity or neoplastic changes.
- Binder will decompose above ca. 200°C.

16. Other information

The Stone wool fibres of this product are exonerated from the carcinogenic classification according to the European directive 97/69/CE and the Regulation (EC) 1272/2008 if they fulfil one of the criteria of the nota Q of these texts. All products manufactured by Rockpanel are made of non-classified fibres and are certified by EUCEB.

EUCEB, European Certification Board of Mineral Wool Products - www.euceb.org, is a voluntary initiative by the mineral wool industry. It is an independent certification authority that guarantees that products are made of fibres, which comply with the exoneration criteria for carcinogenicity (Note Q) of the Directive 97/69/EC and the Regulation (EC) 1272/2008. To ensure that fibres comply with the exoneration criteria all tests and supervision procedures are carried out by independent, expert qualified institutions. EUCEB ensures that the producers of mineral wool have put in place self-control measures.

The mineral wool producers commit to EUCEB to:

- supply sampling and analysis reports established by laboratories recognized by EUCEB, proving that the fibres comply with one of the four criteria of exoneration described in Note Q of the Directive 97/99/EC,
- be controlled, twice per year, of each production unit by an independent third party recognized by EUCEB (sampling and conformity to the initial chemical composition),
- put in place procedures of internal self-control in each production unit.

Persons who wish to obtain more detailed information have to contact the producer (see address on the first page of this sheet) Information given in this document is on the state of our knowledge regarding this material as January 4th, 2021. It is given in good faith.

The attention of users is drawn to possible risks taken when the product is used for other application than the ones it has been designed for.